

POSSIBILITIES THAT EXCITE

COURSE BOOKLET 2024



LEARNING SPARKS MANY POSSIBILITIES

Fancy a school where learning is never boring? Picture classrooms in a Boeing 737 aircraft, an Artificial Intelligence Lab or a high-end French restaurant.

ITE designs our curriculum and programmes with students in mind, and strives to provide a nurturing environment with caring lecturers to help you discover the many possibilities through learning.

For those who thrive through hands-on encounters and immersive experiences, our unique **Hands-on, Minds-on, Hearts-on™** education based on 70% practical training and 30% theoretical lessons, creates an enriching balance.

Choose from a comprehensive range of courses at our **three state-of-the-art Colleges**.

Explore the many possibilities that excite!



CONTENTS

4 PROGRESSION PATHWAYS

5 ITE DIPLOMAS

10 EARLY ADMISSIONS
EXERCISE

11 DIRECT ENTRY SCHEME TO
POLYTECHNIC PROGRAMME

13 3-YEAR *HIGHER NITEC*
PROGRAMME

14 SCHOOL OF APPLIED &
HEALTH SCIENCES

16 SCHOOL OF BUSINESS &
SERVICES

19 SCHOOL OF
DESIGN & MEDIA

22 SCHOOL OF ELECTRONICS &
INFO-COMM TECHNOLOGY

24 SCHOOL OF ENGINEERING

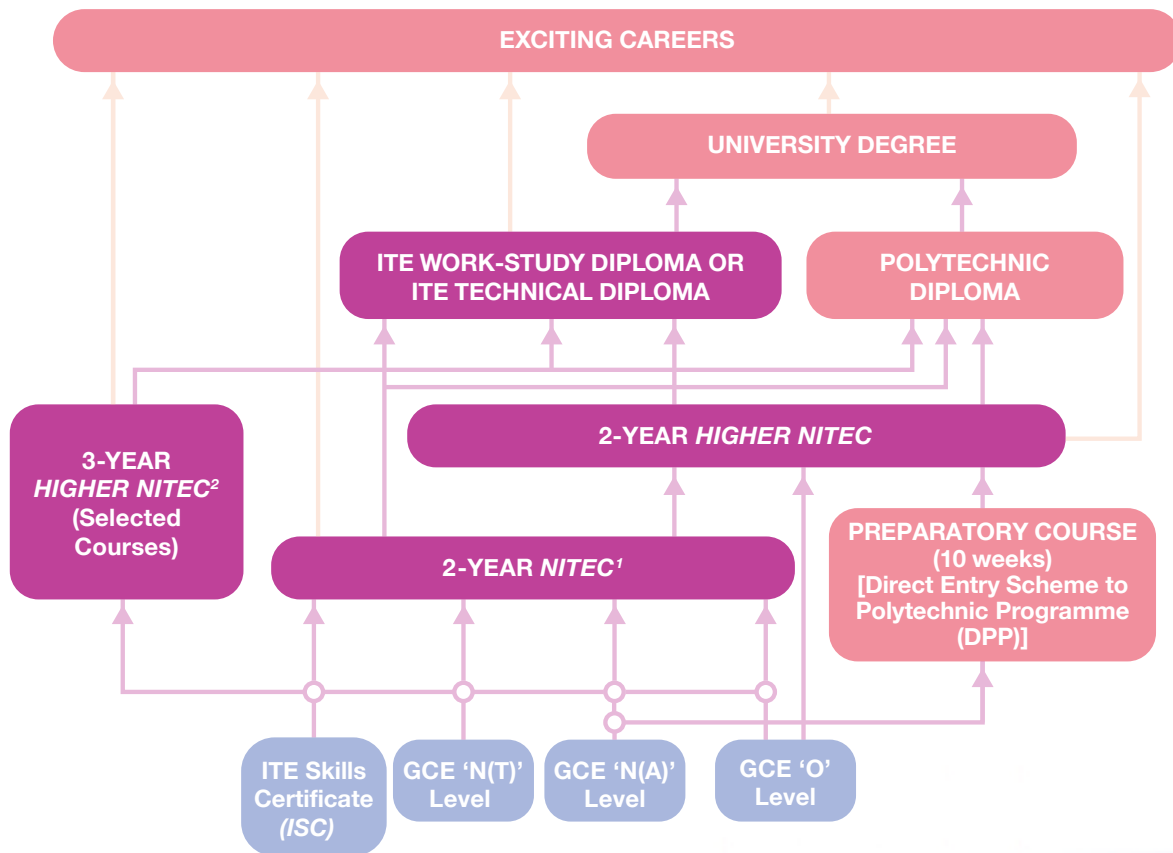
27 SCHOOL OF HOSPITALITY

29 FAQs

30 LIFE AT ITE

32 DISCOVER ITE

PROGRESSION PATHWAYS



ITE also has 3-Year *Nitec* courses with Enhanced *Nitec* Foundation Programme (eNFP):

Offered to N(T) students with 0 or 1 GCE 'N' Level pass. The available 3-Year eNFP courses are:

- *Nitec* in Built Environment (Mechanical & Electrical Services) offered at ITE College West
- *Nitec* in Mechanical Technology offered at ITE College Central
- *Higher Nitec* in Retail & Online Business (4 Years) at ITE College Central and ITE College West

¹Selected *Nitec* courses are available in Traineeship mode

²More information on the 3-Year *Higher Nitec* programme can be found on page 13

ITE DIPLOMAS

ITE offers two types of Diplomas: Work-Study Diplomas and Technical Diplomas.

ITE WORK-STUDY DIPLOMA

The ITE Work-Study Diploma (WSDip) is a unique 2.5-year apprenticeship based programme, designed to provide ITE graduates a head-start in a career related to their discipline of study.

WSDip Trainees are hired as full-time employees. They will receive practical workplace training in companies, guided by industry experts, and undergo off-the-job training at ITE.

WSDip Trainees will receive a monthly salary, employee benefits and full sponsorship of WSDip course fees, while gaining valuable real-world experience on their journey to earning a nationally-recognised diploma.

ITE TECHNICAL DIPLOMA

The ITE Technical Diploma is a full-time 2 to 2.5-year programme run by ITE, together with world-renowned educational institutions from France, Germany, Hong Kong and Switzerland. Students have opportunities to take part in enriching student exchanges and industrial attachments during their courses. With the internationally-recognised Technical Diploma, graduates are well-regarded as specialists in their fields.



ITE WORK-STUDY DIPLOMA

Deepen and gain mastery of your skills with ITE's Work-Study Diploma (WSDip). ITE offers over 40 WSDip courses to both fresh and in-employment ITE graduates.

Comprising 70-80% on-the-job training at the workplace with partner companies and 20-30% off-the-job training via classroom learning at ITE Colleges, the WSDip programme adopts a practice-based curriculum to prepare trainees for promising careers.



Scan to find out more

What are the Benefits?

- Get a fully-sponsored and nationally-recognised Diploma
- Obtain valuable work experience and industry relevant skills
- Have more opportunities for career advancement and further education
- Earn a monthly salary as you learn
- Get a sign-on incentive of \$5,000*

*For fresh ITE graduates from relevant feeder courses who are Singapore Citizens and within three years of their graduation or Operationally Ready Date. Terms and conditions apply.

Who can Apply?

1. Fresh and in-employment[^] ITE graduates who are Singapore Citizens, Permanent Residents or Long Term Visit Pass Plus (LTVP+) Holders who have attained a relevant *Nitec* with a Grade Point Average (GPA) score of **at least 2.0** or a **relevant Higher Nitec**.
2. In-service workers (nominated by existing employer):
 - Equivalent qualifications such as WPLN Level 5 and above
 - Relevant work experience
 - Strong employer endorsement[^]
3. Applicants must be successfully employed full-time by a partner company to be enrolled into the WSDip programme.

[^]Employer must be an ITE Work-Study Diploma programme partner company



“Through ITE’s Work-Study Diploma programme, I was able to gain knowledge and work experience while earning a salary and Diploma. The work experience in particular, greatly built my confidence. No other programme would have given me that.”

MOHAMMAD HAFIZ BIN MOHAMADNOR
Property Executive (WSDip Graduate)
 CBRE Singapore

Engineering

1. Agriculture & Aquaculture Technology
2. Aircraft Cabin Engineering
3. Aircraft Engine Maintenance
4. Aircraft Maintenance Engineering
5. Arboriculture & Horticulture
6. Architectural BIM & Design
7. Automation Engineering
8. Chemical Process Technology
9. Electrical Engineering
10. Facilities Management
11. Land Transport Engineering (Rail)
12. Land Transport Engineering (Vehicle)
13. Marine & Offshore Engineering (Engineering Design)
14. Marine & Offshore Engineering (Production)
15. Mechanical & Electrical Services Supervision
16. Mechanical Systems Engineering
17. Microelectronics (Equipment)
18. Microelectronics (Process)
19. Port Automation Technology (in-service staff only)
20. Security Systems Engineering
21. Vertical Transportation

Business & Services

1. Accountancy **NEW**
2. Airport Operations
3. Community Engagement & Development
4. Culinary Arts & Management
5. Customer Experience Management (Aviation)
6. Customer Experience Management (Lifestyle & Consumer)
7. E-Commerce & Retail
8. Event Management
9. Fitness Management
10. Hotel & Restaurant Management
11. Lifestyle & Recreation Management
12. Logistics & Supply Chain Management
13. Nursing (in-service staff only) **NEW**
14. Opticianry
15. Patient Management & Services
16. Rehabilitation Care
17. Security Operations
18. Tourism Management **NEW**

Infocomm & Media

1. AI & Data Intelligence (AI) **NEW**
2. AI & Data Intelligence (Data Engineering) **NEW**
3. Cloud Management & Operations (Cloud Operations)
4. Cloud Management & Operations (Infrastructure Support)
5. Cyber Security & Forensics
6. Data Centre Infrastructure & Operation
7. Electronics & Computer Engineering **NEW** (Applied Electronics & AI)
8. IT System Integration
9. Media Communication & Digital Marketing



ITE TECHNICAL DIPLOMA

Let your career take flight with a globally-recognised Technical Diploma at ITE!
ITE offers full-time Technical Diplomas to *Nitec* and *Higher Nitec* graduates, in collaboration with renowned institutions in France, Germany, Hong Kong and Switzerland.



Institut Lyfe, France

Technical Diploma in Culinary Arts

Master the skills and expertise to set up and operate a restaurant, manage its culinary operations, dinner events, purchasing, sales and F&B budget. Conduct research and development to introduce new menus and concepts for a contemporary restaurant set-up.



Baden-Württemberg

MINISTERIUM FÜR KULTUS, JUGEND UND SPORT

Carl-Benz-Schule, Germany

Technical Engineer Diploma in Automotive Engineering

Pick up comprehensive skills and knowledge in analysing and resolving complex technical problems associated with motor vehicles, manage workshop operation and repair services, and provide technical advice to customers.

Gottlieb-Daimler-Schule 1, Germany

Technical Engineer Diploma in Machine Technology

Get equipped with a wide range of skills and knowledge in the areas of machine and equipment design, making, assembling, testing, troubleshooting, and commissioning.





Vocational Training Council, Hong Kong SAR

Technical Diploma in Beauty & Wellness Management

Hone the skills and expertise to become a professional therapist in the beauty and wellness industry, to be part of the management team in a beauty-related company or to be involved in research and development of beauty and personal care products.

Technical Engineer Diploma in Civil & Structural Engineering

Gear up to meet the evolving demands needed to support the digital and technological transformation of the built environment industry.



EHL Hospitality Business School, Switzerland

Technical Diploma in Hospitality & Hotel Management

Acquire the skills to be versatile and adaptable in the hospitality industry. Learn about business analytics, technology and facilities management, sustainable hospitality business, branding and more.



“My journey in the Technical Engineer Diploma in Automotive Engineering course has provided me with a holistic experience. The skills and knowledge imparted by my lecturers equipped me to stay relevant on-the-job, not only in Singapore but also across the globe, expanding my career paths and prospects in the automotive industry.”

SOFIAN BIN ABU SAMAH, IAN SAM

*Assistant Manager, Regional Subaru Academy
Motor Image Enterprises Pte Ltd*



EARLY ADMISSIONS EXERCISE

Do you have a special talent or passion for a course in ITE? Secure your place with us before your 'N' or 'O' Levels exams through the Early Admissions Exercise (EAE)!

EAE Application Process

- 1. Application** – Students who are keen can submit their applications in late May / early June 2024 at www.ite.edu.sg.
- 2. Selection** – Shortlisted applicants will have to undergo interviews and/or aptitude tests.
- 3. Offer & Acceptance** – Conditional offers will be given to successful applicants. Applicants who accept the offers within a specified period will get a place in ITE, as long as they meet the Minimum Entry Requirements of the course.

EAE Selection Criteria

A. Submit a 100-word write-up

- Why do you want to apply for the course
- How are your talents and skills relevant to the course?

B. Submit your portfolio

Provide proof (certificates/achievements/sample works) of your skills.

C. Excel in your interview



“I have always been interested in how technology shapes our daily lives. To pursue this passion, I chose to apply for the EAE in *Higher Nitec* in Business Information Systems. This course equips me with the technical know-how needed to excel in the tech industry. It serves as a strong foundation for realising my long-term aspiration of becoming a respected IT leader capable of making an impact on the world!”

JACOB GOH YU SIANG

Higher Nitec in Business Information Systems
ITE College East

Have a question on EAE?

Call 1800 2222 111 or email training@ite.edu.sg to find out more.



Scan to view
EAE video

DIRECT ENTRY SCHEME TO POLYTECHNIC PROGRAMME

Calling all Sec 4 N(A) students: Be guaranteed* progression to polytechnics with ITE's Direct Entry Scheme to Polytechnic Programme (DPP)! There are 18 full-time *Higher Nitec* courses under DPP.

To apply, you will need to meet the Minimum Entry Requirements for the subjects as shown in the tables below and ELMAB3 (English, Mathematics, Best 3 subjects) – 19 points or less (excluding CCA bonus points).

Applied Sciences / Engineering / Info-Communications Technology

Bio-Chemical Technology
Civil & Structural Engineering Design
Electrical Engineering
Electronics Engineering
Mechanical Engineering
Mechatronics Engineering
Business Information Systems
Cyber & Network Security
Immersive Applications & Game
IT Applications Development
IT Systems & Networks

Grade 1 – 4 in English Language
Grade 1 – 4 in Mathematics
Grade 1 – 5 in three other subjects

Business & Services / Hospitality

Accounting
Business Administration
Event Management
Logistics & Supply Chain Management
Service Management
Tourism
Hospitality Operations

Grade 1 – 3 in English Language
Grade 1 – 4 in Mathematics
Grade 1 – 5 in three other subjects

**Upon successful completion of the 2-Year Higher Nitec course in ITE, with the minimum qualifying ITE raw Grade Point Average obtained.*

All successful applicants will go through a 10-week preparatory course starting in January 2024. Upon completion of this course, students will join ITE's April 2024 intake for the Higher Nitec course they are enrolled in.



“The DPP provides me with an outstanding environment that allows me to level up my foundational skills through the bridging programme.”

WONG YIXIN
*Higher Nitec in Cyber and Network Security
ITE College Central*

Application Process

1. Receive GCE 'N' Level results
2. Apply during the Application Period: Four calendar days starting from 2:30pm on the 1st day of GCE 'N' Level results release until 5pm on the last day of application
3. Check application results and decide whether to accept the offer (refer to ITE website for course acceptance period)
4. If successful, report to the posted College on 8 January 2024 to register for your course and make payment for 1st term school fees
5. Start your 10-week preparatory course in January and embark on your *Higher Nitec* course in April

Admission is based on merit, subject to vacancies in the courses.

To get direct admission to a related diploma course at one of the polytechnics, you have to meet the following qualifying criteria:

<i>Higher Nitec</i> Courses	Progress to 1st Year in relevant Polytechnic Diploma Course*	Progress to 2nd Year in relevant Polytechnic Diploma Course*
Applied Sciences [#]	ITE GPA \geq 2.5 points (excluding CCA bonus points [^])	N.A.
Engineering and Info-Communications Technology [#]	ITE GPA \geq 2.5 points (excluding CCA bonus points [^])	ITE GPA \geq 3.5 points (excluding CCA bonus points [^])
Business & Services	ITE GPA \geq 3.0 points (excluding CCA bonus points [^])	N.A.

*DPP students who successfully complete their *Higher Nitec* courses and attain the required minimum qualifying *Higher Nitec* Grade Point Average (GPA) scores are guaranteed a place in the 1st Year of relevant Polytechnic Diploma courses that are mapped to their *Higher Nitec* courses. Students who meet the minimum qualifying GPA for 2nd Year entry are not guaranteed admission into Year 2 of one of the mapped courses. Admission is based on merit, subject to vacancies in the courses.

[#]For *Higher Nitec* courses in Applied Sciences, Engineering or Info-Communications Technology, in addition to the qualifying GPAs, students are required to take up and pass a Mathematics elective at ITE to be eligible for polytechnic courses under DPP. GCE 'N' (Academic) holders with at least Grade C in GCE 'O' Level Mathematics will be exempted from this requirement.

[^]CCA grades will be used for computing students' net GPA at ITE for selection and posting to a Polytechnic Diploma course.

3-YEAR *HIGHER NITEC* PROGRAMME

ITE introduced 3-year *Higher Nitec* full-time programmes in Academic Year 2022. With the *Nitec* and *Higher Nitec* curricula streamlined, this option allows students to attain a *Higher Nitec* qualification directly in three years instead of four.

N(A) and N(T) students can apply for the 3-year *Higher Nitec* programme using existing *Nitec* entry requirements. GCE 'O' Level and Direct Entry Scheme to Polytechnic Programme (DPP) students who meet the Minimum Entry Requirements will join the programme directly in the second year, and will continue to attain their *Higher Nitec* in two years.

The 3-year *Higher Nitec* courses are open to graduating students with GCE 'N' Level and GCE 'O' Level qualifications. Students may apply for admission to these courses through the Joint Intake Exercise (JIE) in December 2023 or January 2024, or the Early Admissions Exercise (EAE) in May 2024. These students will automatically be enrolled into the three-year curricular pathway leading to a *Higher Nitec* qualification.

What are the Benefits?

- Gain deeper industry-relevant skills for employment
- Build a strong foundation for further education and skills upgrading
- Experience real work-life with refreshed Integrated Industry Attachments



Scan to find
out more



“The three-year *Higher Nitec* in IT Applications Development programme ignited my passion and interest in the field of IT technology. I was able to apply the tools I have learnt to overcome real work-life challenges effectively during my internship. Being in the accelerated pathway also trains me in my perseverance and time management.”

CAROLINE GOH QIAN HUI
Higher Nitec in IT Applications Development
ITE College West

SCHOOL OF APPLIED & HEALTH SCIENCES



ONLY AT ITE COLLEGE EAST

2-Year Higher Nitec Courses	Minimum Entry Requirements
◆ Applied Food Science NEW	3 GCE 'O' Level Grades: Grade 1-8 in English Language Grade 1-7 in Mathematics (Elementary / Additional) Grade 1-8 in one of the following subjects: <ul style="list-style-type: none"> • Biology • Biotechnology • Chemistry • Combined Science • Human & Social Biology • Integrated Science • Physics / Engineering Science • Science (Chemistry, Biology) • Science (Physics, Biology) • Science (Physics, Chemistry) / Physical Science • Science (Physics, Biology, Chemistry)
Bio-Chemical Technology NEW	
◆ Chemical Process Technology NEW	
◆ Community Care & Social Services NEW	
◆ Nursing NEW	
Opticianry NEW	
3-Year Higher Nitec Courses	Minimum Entry Requirements
◆ Applied Food Science NEW	3 GCE 'N' Level Passes: Grade A-D or Grade 1-5 in Mathematics or Science* and two other subjects <i>Note:</i> <i>*Mobile Robotics, Smart Electrical Technology, IoT Applications Mechanical Design & Automation, and Mobile Web Applications subjects can be used in lieu of Science for admission to these courses.</i>
Bio-Chemical Technology NEW	
◆ Chemical Process Technology NEW	
◆ Community Care & Social Services NEW	
Opticianry NEW	
◆ Nursing NEW	OR 2 GCE 'O' Level Grades: Grade 1-8 in any two subjects 3 GCE 'N' Level Passes: Grade A-D or Grade 1-5 in English Language, Mathematics and one other subject OR 2 GCE 'O' Level Grades: Grade 1-8 in any two subjects

Note:

- ◆ Applicants are required to pass a pre-admission medical exam
- ◆ In line with industry requirements, applicants must ensure that they do not have colour appreciation deficiency
- ◆ Applicants are required to pass a pre-admission medical examination and fulfil the 'Fitness to Practice Advisory' for nursing students stipulated by the Singapore Nursing Board

Course listing is accurate as of January 2024

SCHOOL OF BUSINESS & SERVICES



2-Year Higher Nitec Courses	ITE College			Minimum Entry Requirements
	Central	East	West	
Accounting	✓	✓	✓	3 GCE 'O' Level Grades: Grade 1-7 in English Language Grade 1-8 in Mathematics (Elementary / Additional) or Principles of Accounts* Grade 1-7 in one other subject <i>Note:</i> *To be eligible for selection, applicants must also have sat for Mathematics (Elementary / Additional)
Business Administration <small>NEW</small>	✓	✓	✓	
Event Management	✓			
Logistics & Supply Chain Management <small>NEW</small>		✓		
Retail & Online Business	✓	✓	✓	
Service Management			✓	
◆ Sport Management	✓	✓	✓	
◆ Beauty & Wellness Management		✓		3 GCE 'O' Level Grades: Grade 1-6 in English Language Grade 1-7 in two other subjects <i>Note:</i> *To be eligible for selection, applicants must also have sat for Mathematics (Elementary / Additional)
Hairdressing & Salon Management <small>NEW</small>		✓		
Passenger Services	✓	✓		
Tourism			✓	
◆◆ Early Childhood Education	✓			3 GCE 'O' Level Grades: Grade 1-6 in English Language Grade 1-7 in two other subjects <i>Note:</i> *To be eligible for selection, applicants must also have sat for Mathematics (Elementary / Additional)

Note:

- ◆ Applicants are required to pass a pre-admission medical exam
- ◆ Conducted by the National Institute of Early Childhood Development in collaboration with ITE

Course listing is accurate as of January 2024

3-Year <i>Higher Nitec</i> Courses	ITE College			Minimum Entry Requirements
	Central	East	West	
Accounting	✓	✓	✓	3 GCE 'N' Level Passes: Grade A-D or Grade 1-5 in English Language and two other subjects OR 2 GCE 'O' Level Grades: Grade 1-8 in any two subjects
Business Administration <small>NEW</small>	✓	✓	✓	
Event Management <small>NEW</small>	✓			
Passenger Services <small>NEW</small>	✓	✓		
◆ Sport Management	✓	✓	✓	
Tourism <small>NEW</small>			✓	
◆ Beauty & Wellness Management <small>NEW</small>		✓		Completed GCE 'N' or GCE 'O' Level
Hairdressing & Salon Management <small>NEW</small>		✓		
Logistics & Supply Chain Management <small>NEW</small>		✓		
Retail & Online Business <small>NEW</small>	✓	✓	✓	

Note:

- ◆ Applicants are required to pass a pre-admission medical exam

Course listing is accurate as of January 2024



SCHOOL OF DESIGN & MEDIA



ONLY AT ITE COLLEGE CENTRAL

2-Year Higher Nitec Courses	Minimum Entry Requirements
◆ Filmmaking (Cinematography)	3 GCE 'O' Level Grades: Grade 1-7 in English Language Grade 1-8 in Mathematics (Elementary / Additional) or Principles of Accounts* Grade 1-7 in one other subject <i>Note:</i> *To be eligible for selection, applicants must also have sat for Mathematics (Elementary / Additional)
◆◆ Performance Production	
◆ Interactive Design	3 GCE 'O' Level Grades: Grade 1-8 in English Language Grade 1-7 in Mathematics (Elementary / Additional) or Principles of Accounts* Grade 1-8 in one other subject <i>Note:</i> *To be eligible for selection, applicants must also have sat for Mathematics (Elementary / Additional)
◆ Visual Effects	
◆ Architectural Technology	3 GCE 'O' Level Grades: Grade 1-8 in English Language Grade 1-7 in Mathematics (Elementary / Additional) Grade 1-8 in one of the following subjects: <ul style="list-style-type: none"> • Biology • Biotechnology • Chemistry • Combined Science • Computing / Computer Studies • Design & Technology • Electronics / Fundamentals of Electronics • Human & Social Biology • Integrated Science • Physics / Engineering Science • Science (Chemistry, Biology) • Science (Physics, Biology) • Science (Physics, Chemistry) / Physical Science • Science (Physics, Biology, Chemistry)
◆ Motion Graphics	3 GCE 'O' Level Grades: Grade 1-7 in English Language Grade 1-8 in two other subjects <i>Note:</i> To be eligible for selection, applicants must also have sat for Mathematics (Elementary / Additional)
◆ Visual Merchandising	

Note:

- ◆ In line with industry requirements, applicants must ensure that they do not have colour appreciation deficiency
- ◆ In line with industry requirements, applicants must ensure that they do not have fear of heights

Course listing is accurate as of January 2024

Nitec Courses	Minimum Entry Requirements
◆ Architectural Technology	3 GCE 'N' Level Passes: Grade A-D or Grade 1-5 in Mathematics and two other subjects OR
◆ Interior & Exhibition Design	2 GCE 'O' Level Grades: Grade 1-8 in any two subjects
◆ Fashion Apparel Production & Design	3 GCE 'N' Level Passes: Grade A-D or Grade 1-5 in Mathematics or Science* and two other subjects
◆ Video Production	<i>Note:</i> <i>*Mobile Robotics, Smart Electrical Technology, IoT Applications, Mechanical Design & Automation, and Mobile Web Applications subjects can be used in lieu of Science for admission to these courses.</i> OR 2 GCE 'O' Level Grades: Grade 1-8 in any two subjects
◆ Digital Animation	Completed GCE 'N' or GCE 'O' Level
◆ Product Design	
◆ Visual Communication	3 GCE 'N' Level Passes: Grade A-D or Grade 1-5 in English Language and two other subjects OR 2 GCE 'O' Level Grades: Grade 1-8 in any two subjects

Note:

- ◆ In line with industry requirements, applicants must ensure that they do not have colour appreciation deficiency

Course listing is accurate as of January 2024

SCHOOL OF ELECTRONICS & INFO-COMM TECHNOLOGY



2-Year Higher Nitec Courses	ITE College			Minimum Entry Requirements
	Central	East	West	
AI Applications	✓		✓	3 GCE 'O' Level Grades: Grade 1-8 in English Language Grade 1-7 in Mathematics (Elementary / Additional) Grade 1-8 in one of the following subjects: • Biology • Biotechnology • Chemistry • Combined Science • Computing / Computer Studies • Design & Technology • Electronics / Fundamentals of Electronics • Human & Social Biology • Integrated Science • Physics / Engineering Science • Science (Chemistry, Biology) • Science (Physics, Biology) • Science (Physics, Chemistry) / Physical Science • Science (Physics, Biology, Chemistry)
Business Information Systems		✓		
Cyber & Network Security	✓	✓	✓	
Data Engineering			✓	
♦ Electronics Engineering	✓	✓	✓	
Immersive Applications & Game	✓			
IT Applications Development	✓	✓	✓	
IT Systems & Networks	✓	✓	✓	
♦ Security System Integration		✓	✓	
3-Year Higher Nitec Courses	ITE College			
	Central	East	West	
AI Applications	✓		✓	3 GCE 'N' Level Passes: Grade A-D or Grade 1-5 in Mathematics or Science* and two other subjects <i>Note:</i> <i>*Mobile Robotics, Smart Electrical Technology, IoT Applications, Mechanical Design & Automation, and Mobile Web Applications subjects can be used in lieu of Science for admission to these courses.</i> OR 2 GCE 'O' Level Grades: Grade 1-8 in any two subjects
Business Information Systems		✓		
Cyber & Network Security	✓	✓	✓	
Data Engineering			✓	
♦ Electronics Engineering	✓	✓	✓	
Immersive Applications & Game	✓			
IT Applications Development	✓	✓	✓	
IT Systems & Networks	✓	✓	✓	
♦ Security System Integration		✓	✓	

Note:

♦ In line with industry requirements, applicants must ensure that they do not have colour appreciation deficiency

SCHOOL OF ENGINEERING



2-Year Higher Nitec Courses	ITE College			Minimum Entry Requirements
	Central	East	West	
Civil & Structural Engineering Design		✓		3 GCE 'O' Level Grades: Grade 1-8 in English Language Grade 1-7 in Mathematics (Elementary / Additional) Grade 1-8 in one of the following subjects: <ul style="list-style-type: none"> • Biology • Biotechnology • Chemistry • Combined Science • Computing / Computer Studies • Design & Technology • Electronics / Fundamentals of Electronics • Human & Social Biology • Integrated Science • Physics / Engineering Science • Science (Chemistry, Biology) • Science (Physics, Biology) • Science (Physics, Chemistry) / Physical Science • Science (Physics, Biology, Chemistry)
◆ Electrical Engineering		✓	✓	
Engineering with Business	✓			
◆ Facility Management		✓	✓	
Integrated Mechanical & Electrical Design		✓		
◆ Landscape Management & Design		✓		
Marine Engineering	✓			
Marine & Offshore Technology	✓			
Mechanical Engineering	✓	✓	✓	
◆ Mechatronics Engineering	✓		✓	
Offshore & Marine Engineering Design	✓			
◆ Rapid Transit Engineering			✓	
◆ Robotics & Smart Systems	✓			

Note:

◆ In line with industry requirements, applicants must ensure that they do not have colour appreciation deficiency

Course listing is accurate as of January 2024



Nitec Courses	ITE College			Minimum Entry Requirements
	Central	East	West	
♦ Aerospace Avionics	✓			3 GCE 'N' Level Passes: Grade A-D or Grade 1-5 in Mathematics and two other subjects OR 2 GCE 'O' Level Grades: Grade 1-8 in any two subjects
♦ Aerospace Technology	✓			
♦ Electrical Technology (Lighting & Sound)		✓	✓	
♦ Electrical Technology (Power & Control)		✓	✓	
Aerospace Machining Technology	✓			3 GCE 'N' Level Passes: Grade A-D or Grade 1-5 in Mathematics or Science* and two other subjects <i>Note:</i> <i>*Mobile Robotics, Smart Electrical Technology, IoT Applications, Mechanical Design & Automation, and Mobile Web Applications subjects can be used in lieu of Science for admission to these courses.</i> OR 2 GCE 'O' Level Grades: Grade 1-8 in any two subjects
Digital & Precision Engineering	✓			
♦ Mechatronics & Robotics	✓		✓	
♦ Rapid Transit Technology			✓	
♦ Automotive Technology			✓	Completed GCE 'N' or GCE 'O' Level
♦ Built Environment (Mechanical & Electrical Services)		✓	✓	
♦ Built Environment (Vertical Transportation)		✓		
Mechanical Technology	✓	✓	✓	
♦ Urban Greenery & Landscape		✓		

Note:

♦ In line with industry requirements, applicants must ensure that they do not have colour appreciation deficiency

Course listing is accurate as of January 2024

SCHOOL OF HOSPITALITY



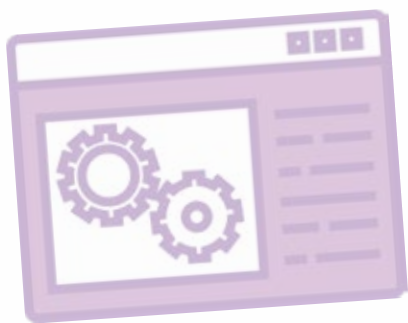
ONLY AT ITE COLLEGE WEST

2-Year Higher Nitec Courses	Minimum Entry Requirements
Hospitality Operations	3 GCE 'O' Level Grades: Grade 1-7 in English Language Grade 1-7 in two other subjects <i>Note:</i> <i>To be eligible for selection, applicants must also have sat for Mathematics (Elementary / Additional)</i>
Nitec Courses	Minimum Entry Requirements
◆ Hospitality Operations	3 GCE 'N' Level Passes: Grade A-D or Grade 1-5 in English Language and two other subjects OR 2 GCE 'O' Level Grades: Grade 1-8 in any two subjects
◆ Pastry & Baking	
◆ Western Culinary Arts	
◆ Asian Culinary Arts	Completed GCE 'N' or GCE 'O' Level

Note:

- ◆ Applicants are required to pass a pre-admission medical exam

Course listing is accurate as of January 2024



FAQS

Serious Questions

Q: Is there any Financial Assistance available?

A: ITE offers different financial assistance schemes to help full-time students cover education costs. Please note that WSDip trainees are not eligible for financial assistance, as they would be receiving salaries.

Q: I need assistance navigating my educational and professional journey.

A: If you need advice or guidance, our team of Education and Career Coaches at the Education & Career Centre are here to guide you in making an informed decision.

Not-So-Serious Questions

Q: What comes after my Nitec / Higher Nitec?

A: You can consider ITE Diplomas! ITE offers two types of Diploma programmes: Work-Study Diplomas and Technical Diplomas. Our Diplomas fulfil the aspirations of our *Nitec* and *Higher Nitec* graduates for academic and career progression. Students especially appreciate the hands-on training methods of these Diplomas, and our Diploma graduates enjoy strong employment outcomes, including the options to further their studies at local universities.

Q: What time does school start?

A: ITE is less structured as compared to Secondary Schools, and the timetables vary from course to course. Hence, students in different courses start at different times.



LIFE AT ITE

Overseas Exposure Programme

Develop your intercultural skills, immerse yourself in a different culture and gain transformative global perspectives through the various programmes:

- **Overseas Industrial Attachment Programme** where you will be attached to an overseas company for a short working stint.
- **Overseas Student Exchange Programme** where you will attend classes in an overseas institution.
- **Overseas Service & Development Programme** where you will undertake a community service project or take part in an overseas competition, seminar, conference or leadership programme.

Co-Curricular Activities (CCA)

What's school life without CCAs? At ITE, a vibrant campus life awaits you with over 100 Co-Curricular Activities (CCAs) to choose from.



“Student Council (SC) has given me the opportunity to lead not only on an event level, but as the president of the student council. It has opened my eyes to understanding the different needs and working styles people have.”

AARON CHIN
Student Council President 2019/20
Valedictorian & Outstanding Graduate
(School of Electronics & Infocomm Technology)
Lee Kwan Yew Model Student Award



Centre for the Music and The Arts (CeMTA)

The Centre for the Music and The Arts (CeMTA) enhances artistic experiences at ITE Colleges through performing and visual arts initiatives. With a focus on arts platforms, talent development, and arts events, CeMTA fosters cultural vibrancy, promotes artistic engagement, and nurtures talent potential among students and alumni.



Scan to find out more

Community Service

Participate in impactful community service through our student clubs! From caring for the elderly and conducting home repairs to fostering genuine connections with youths in need, our clubs provide hands-on experiences that cultivate empathy, leadership, and social responsibility.



DISCOVER ITE

Customer & Visitor Centres

ITE HQ & ITE College Central

Address: Blk A, Level 2, 2 Ang Mo Kio Drive, Singapore 567720

Tel: 6590 2211

Email: college_central@ite.edu.sg

ITE College East

Address: Administration Block, Level 1, 10 Simei Ave, Singapore 486047

Tel: 6590 2262

Email: college_east@ite.edu.sg

ITE College West

Address: Blk 2, Level 2, 1 Choa Chu Kang Grove, Singapore 688236

Tel: 6590 2628

Email: college_west@ite.edu.sg

**All Centres are open from 8:30am – 6:00pm,
Mondays to Fridays (closed on Weekends and Public Holidays)*



www.ite.edu.sg



facebook.com/ITESpore



instagram.com/itespore



tiktok.com/@itesingapore



youtube.com/itespore



x.com/ITESpore



linkedin.com/school/ite-spore

POSSIBILITIES THAT EXCITE

COURSE BOOKLET 2024

