

Secondary 4 & 5 Principal-Meets-Parents

27 January 2024

Principal's Address

后港中学



HOUGANG
SECONDARY SCHOOL



Re-Envisioned from 2024

School Vision

Nurturing Empowered, Future-Ready Hougeans of Character and Purpose





School Mission

Care
Lead
Inspire
Partner





Our School Values

GratITUDE

Respect

Empathy

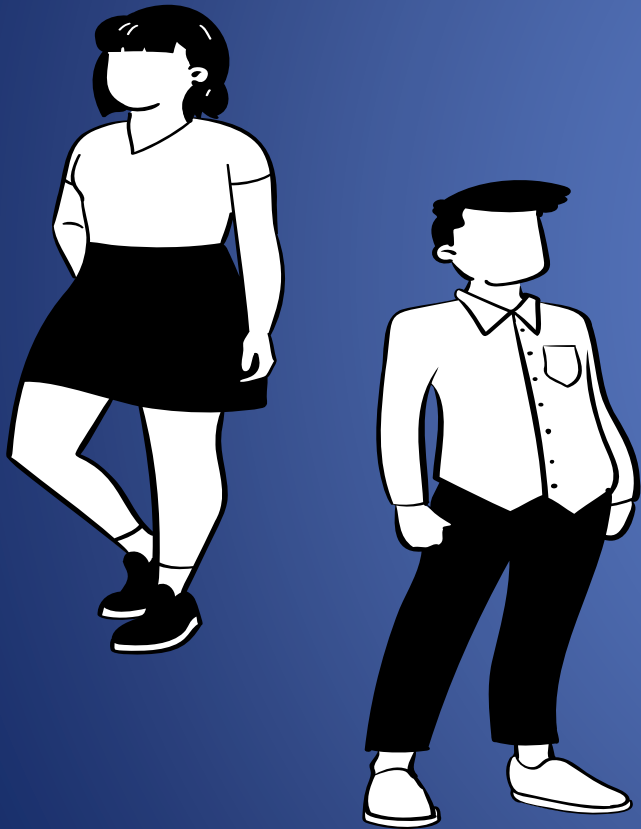
Adaptability

Trustworthiness

**FROM GRIT
TO GREAT!**



Every Hougean



A Future-Ready Learner

An Empowered Leader

A Resilient Innovator

A Community Builder

JANUARY

- **GREAT Start Week**
- **Learner-Centered Programme I**
- **Home Based Learning**
- **Student-Initiated Learning**

FEBRUARY

- **Home Based Learning**
- **Student-Initiated Learning**

MARCH

- **CCA stand down**
- **Extra Curriculum Time (ECT)**

Sec 4/5 Road Map

APRIL

- **HS Sports Carnival**
- **Student Initiated Learning Submission**
- **NAPFA Test**
- **Learner-Centred Programme II**
- **Interclass Games**

MAY

- **Inspire@ HS Enrichment Series (e.g. ALP, learning journeys, etc.)**
- **GCE 'O' Level MTL exams**

JULY/AUGUST

- **EAE Interviews**
- **GCE 'N' & 'O' Level Oral exams**
- **School 'N' & 'O' Level Prelim exams**

SEPTEMBER

- **GCE 'N' Level Written exams**
- **GCE 'O' Level Science Practical exams**
- **Graduation Day**

OCTOBER/NOVEMBER

- **GCE 'O' Level Written exams**

Top Concerns of Upper Sec Students

Areas of Concern

Exam Readiness

Time management

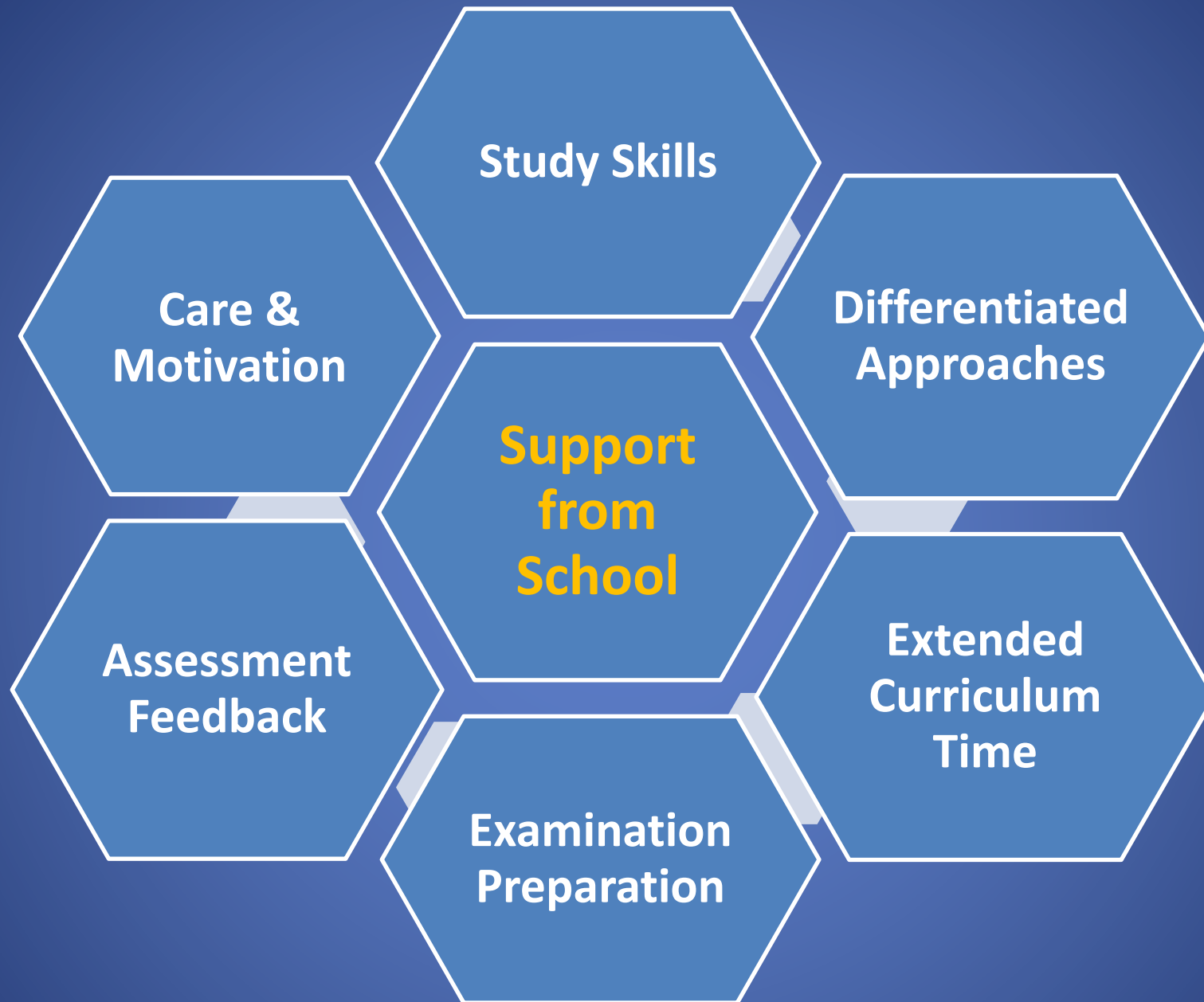
Career Guidance (Post-Secondary)

Conducive learning environment

Social-Emotional Support (School)

Safe Management Measures (SMM)

Financial



As Empowered Leaders of Self5 As @ HS

Attendance: Being present and punctual.

Attire: Being appropriately attired and groomed.

Attitude: Having the right learning attitude.

Activities: Ensuring a conducive learning environment, with the **right materials on the table**. Being participative during lessons. **Submit quality homework on time**.

Attention : Being attentive during lessons.

How else do we support our students beyond the academic subjects?



Exposure through LJs to Poly in Jan, and Career talks and Sharing by Alumni in March 2024



Guidance in preparing for Aptitude-based Admission (EAE and DSA) and digital portfolio through talks and CCE lessons in Term 1



Building Mental Fitness (building a wellness capsule and positive outlook of the future) through CCE lessons and assembly programmes throughout the year



Our Counsellors



Ms Juan Pei-Ling ECG Counsellor

1. Face-to-face at the Engagement Centre, every Tue & Wed (8am – 5pm)

2. Book appointment via MOE ECG Counsellor booking form

<https://go.gov.sg/hss-ecgc>,

OR scan this QR code:



Our Counsellors



Mrs Laila

Senior School Counsellor

Book appointment
face-to-face at the
counselling room
OR
via Character Coach

Our Expectations of Hougeans

Please refer to the **HS Student Handbook** on the school website for school rules, expectation and consequences.

The screenshot shows the top navigation bar of the Hougang Secondary School website. The 'QUICK LINKS' dropdown menu is open, listing various options. An orange arrow labeled '1' points to the 'QUICK LINKS' menu, and another orange arrow labeled '2' points to the 'For Students' option in the dropdown.

HOUGANG SECONDARY SCHOOL

OPEN HOUSE [↗](#) HBL-SIL DEPARTMENTS [▼](#) KEY PROGRAMMES [▼](#) CO-CURRICULAR ACTIVITIES [▼](#) ABOUT US [▼](#) QUICK LINKS [▼](#) Q

1

2

- Secondary One Registration
- HBL SIL
- For Students
- For Parents
- For Staff
- PLD Initiative
- Admin
- Appeal For Transfer Into HS
- HS ICT Helpdesk Form

OUR FACEBOOK [↗](#) OUR INSTAGRAM [↗](#)

OUR LATEST UPDATES

Announcements

The screenshot shows the 'For Students' dropdown menu expanded, listing various options. An orange arrow labeled '3' points to the 'Download HS Student Handbook (04 Jan 2024)' link.

Secondary One Registration

HBL SIL [▼](#)

For Students [▼](#)

For Parents [▼](#)

For Staff [▼](#)

PLD Initiative [▼](#)

Admin [▼](#)

Appeal For Transfer Into HS

HS ICT Helpdesk Form

3

Pathway for Students

- [📄 A Guide To Post-Secondary Admission Exercises](#)
- [On Poly Foundation Program \(PFP\) \[↗\]\(#\)](#)
- [On ITE to Poly Program \(DPP\) \[↗\]\(#\)](#)

HS Student Handbook

[Download HS Student Handbook \(04 Jan 2024\) \[↗\]\(#\)](#)

Timetable 2024

[📄 Download Class Timetable 2024 Semester 1](#)

HS ICT Helpdesk Form

Communicating with Teachers

- In line with the Ministry of Education's Five-Day Work Week, parents are advised that teachers can be contacted during weekdays between 7.30 am and 6 pm.
- All teachers' email addresses are also available on the school website for parents' convenience.
- Parents can also contact the General Office at 6385 1990 for further assistance.

THANK YOU!